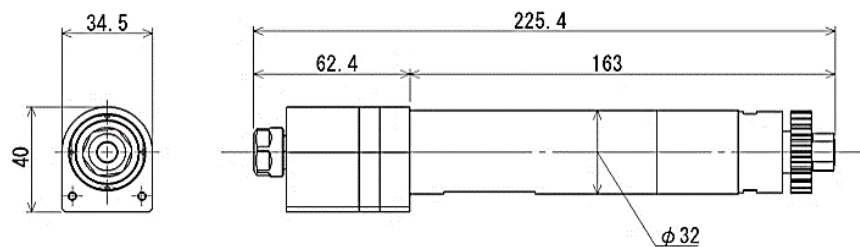
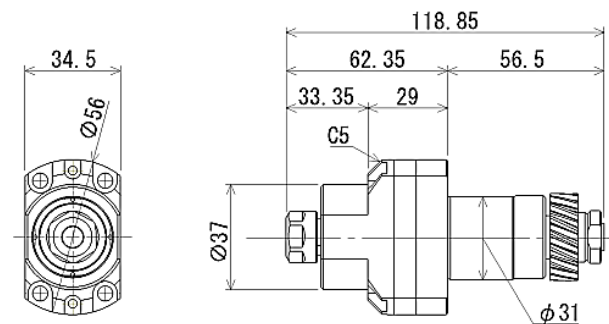


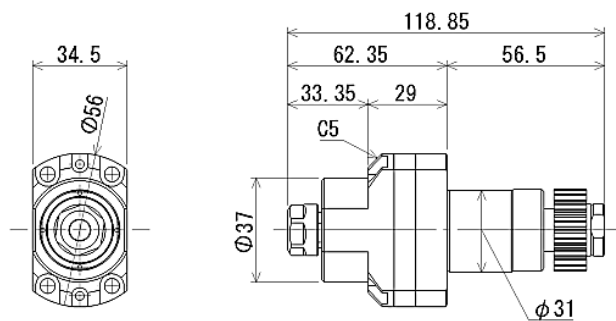
CSM
series



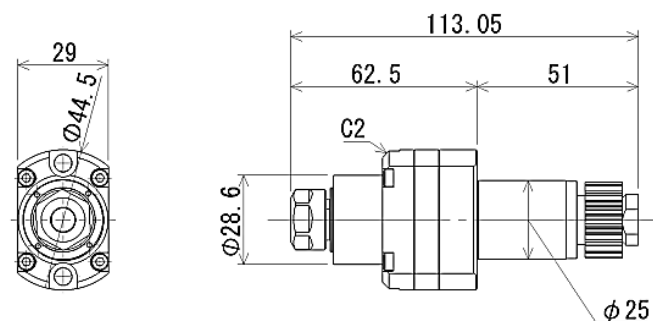
CSM4-01



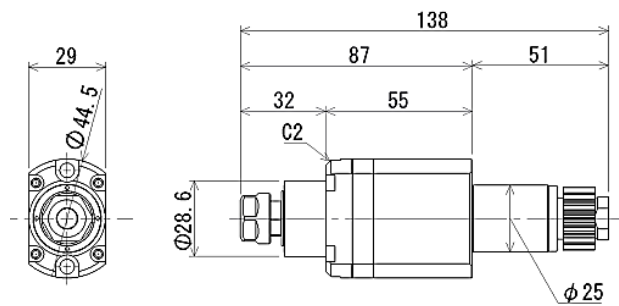
CSM4-02



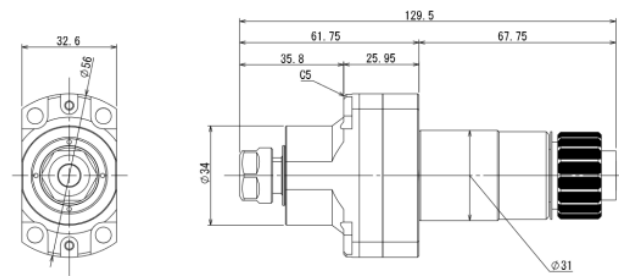
CSM4-03



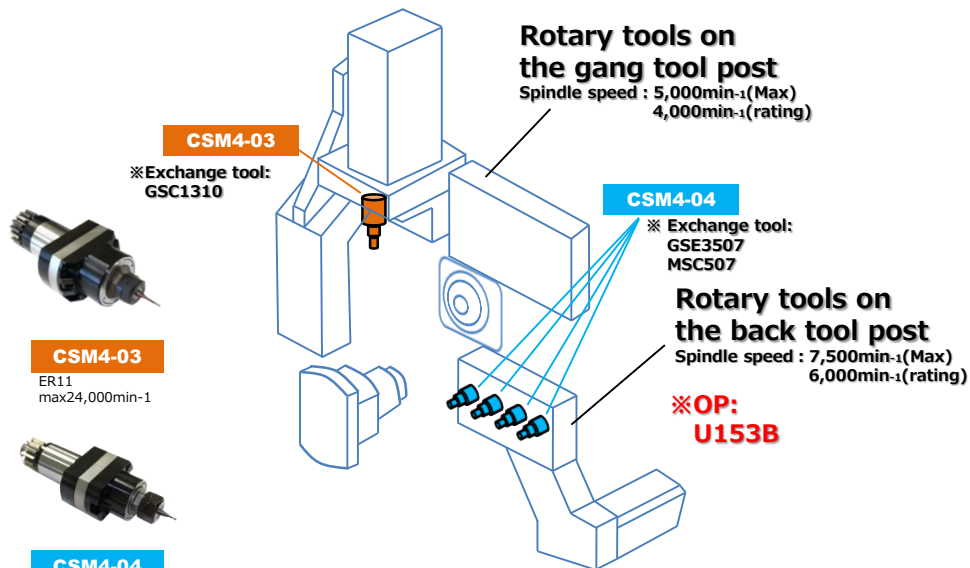
CSM4-04



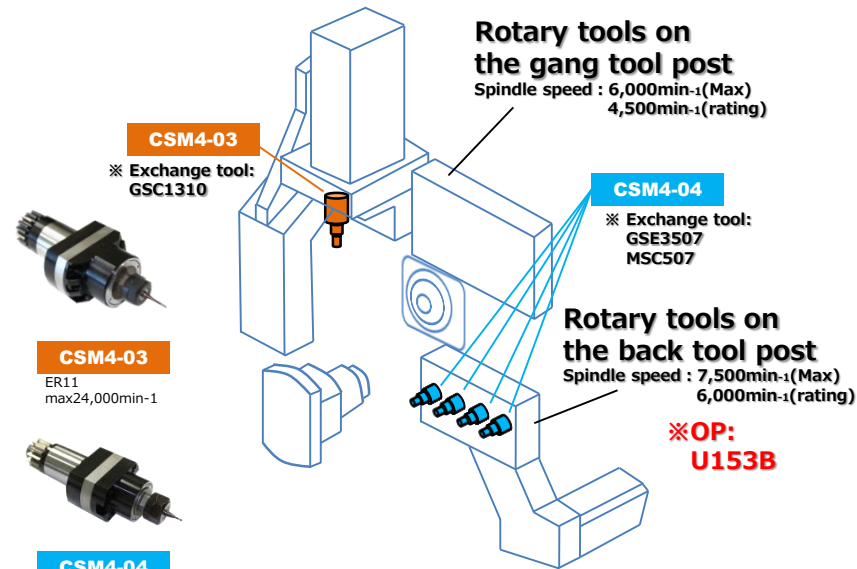
CSM4-05



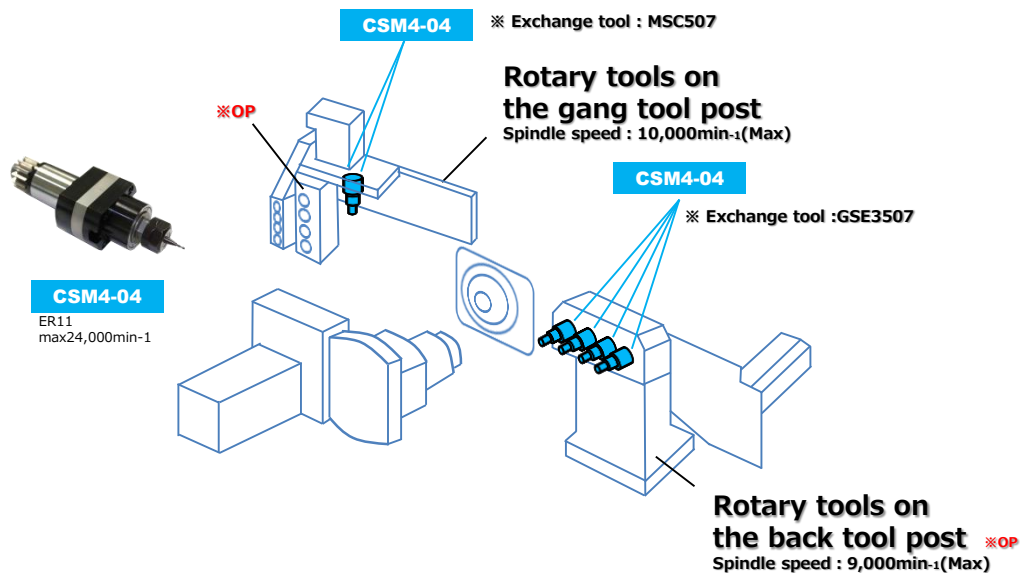
CSM4-07



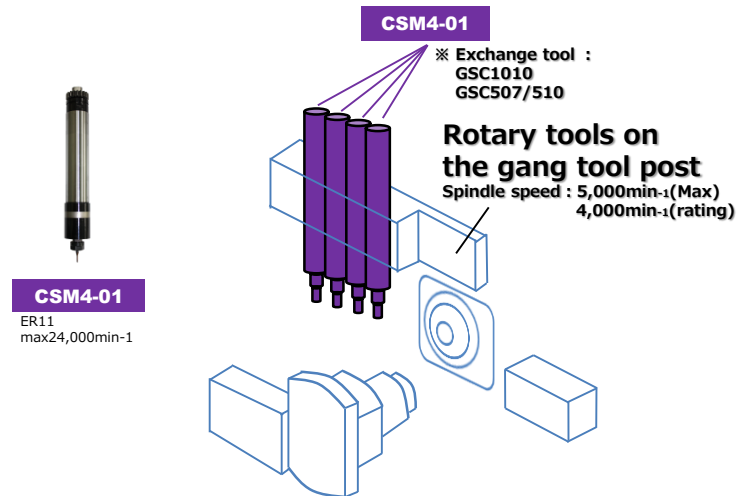
•Cincom A20VII Evolution Line
•Cincom A32VII Evolution Line



•Cincom A20VII(A20-3F7)



•Cincom L12VII Innovation Line



•Cincom L20

Rotary tools on the gang tool post

Spindle speed : 5,000min⁻¹(Max)
4,000min⁻¹(rating)

CSM4-02

※ Exchange tool :
GSC1210

CSM4-01

※ Exchange tool :
GSC1010

CSM4-04

※ Exchange tool :
GSE3507

Rotary tools on the back tool post
Spindle speed : 5,000min⁻¹(Max)
4,000min⁻¹(rating)

CSM4-01

ER11
max24,000min⁻¹

CSM4-02

ER11
max24,000min⁻¹

CSM4-04

ER11
max24,000min⁻¹

•Cincom L20EⅧ・Ⅸ Evolution Line

Rotary tools on the gang tool post

Spindle speed : 6,000min⁻¹(Max)
4,500min⁻¹(rating)

※Ⅷ・Ⅸ

CSM4-03

※ Exchange tool :
GSC1310

CSM4-04

※ Exchange tool :
MSC507

Rotary tools on the back tool post
U153B/U155B

Spindle speed : 7,500min⁻¹(Max)
6,000min⁻¹(rating)

Opposite tool post
Rotary tools
U128B

Spindle speed : 7,500min⁻¹(Max)
6,000min⁻¹(rating)

CSM4-05

CSM4-03

ER11
max24,000min⁻¹

CSM4-04

ER11
max24,000min⁻¹

CSM4-05

ER11
max24,000min⁻¹

•Cincom L220Ⅷ・Ⅸ・X・ⅩⅡ

Rotary tools on the gang tool post

Spindle speed : 5,000min⁻¹(Max)
4,000min⁻¹(rating)

CSM4-01

※ Exchange tool :
GSC1010

CSM4-02

※ Exchange tool :
GSC1210

CSM4-01

ER11
max24,000min⁻¹

CSM4-02

ER11
max24,000min⁻¹

CSM4-04

ER11
max24,000min⁻¹

CSM4-05

ER11
max24,000min⁻¹

CSM4-04

※ Exchange tool :
GSE3507/ MSC507

Rotary tools on the back tool post

Spindle speed : 5,000min⁻¹(Max)
4,000min⁻¹(rating)

Opposite tool post
Rotary tools

Spindle speed : 7,500min⁻¹(Max)
6,000min⁻¹(rating)

CSM4-05

•Cincom L20X Innovation Line

Rotary tools on the gang tool post

Spindle speed : 6,000min⁻¹(Max)
4,500min⁻¹(rating)

CSM4-03

※ Exchange tool :
GSC1310

CSM4-03

※ Exchange tool :
GSC1310

Rotary tools on the back tool post

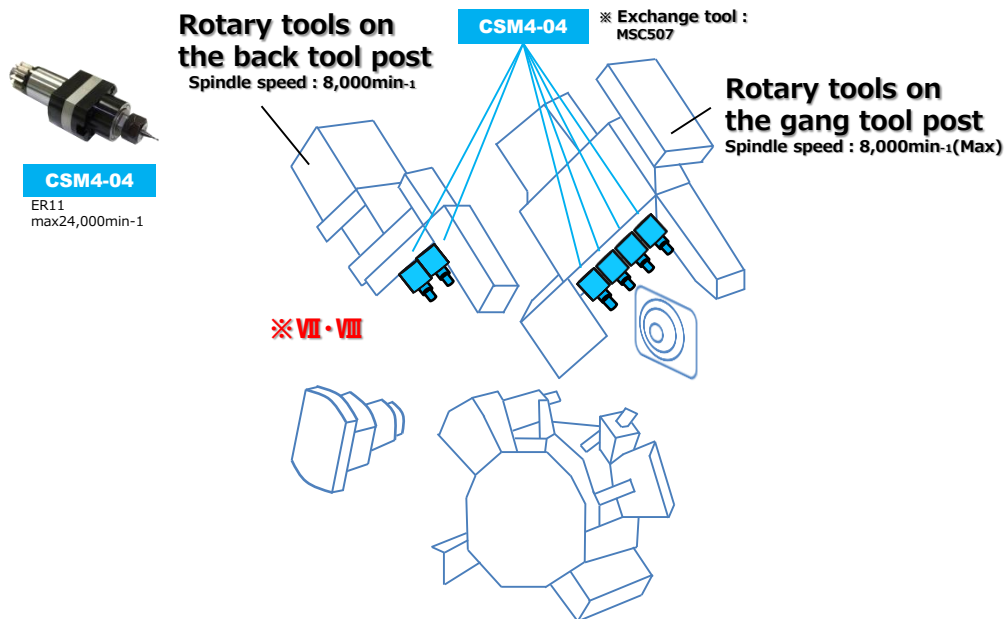
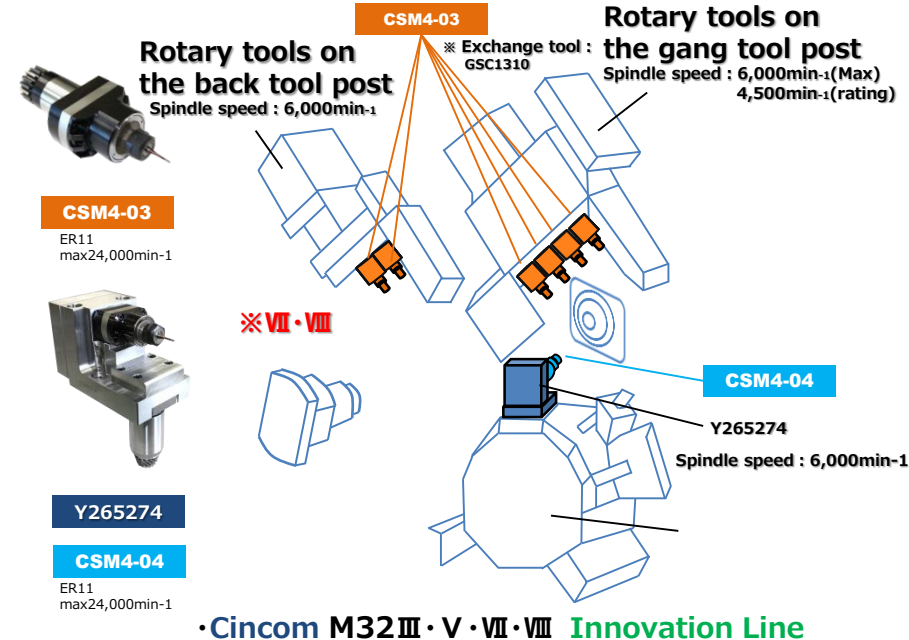
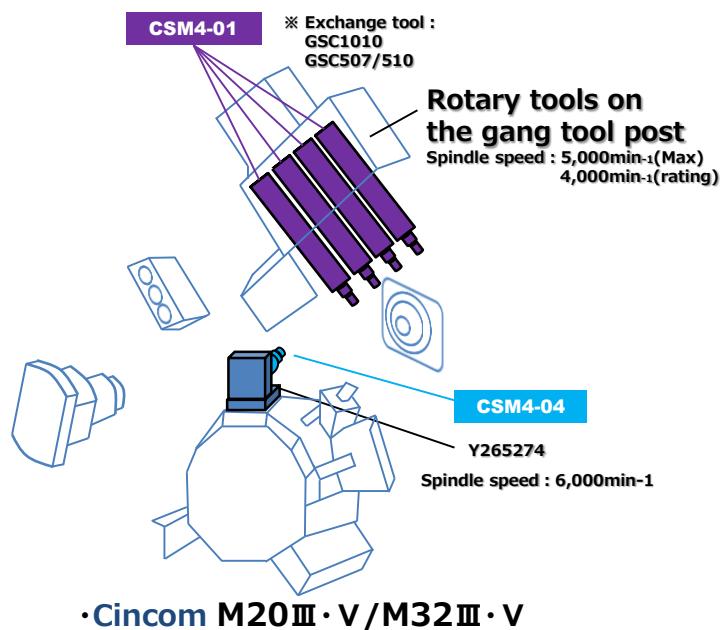
Spindle speed : 6,000min⁻¹(Max)
3,000min⁻¹(rating)

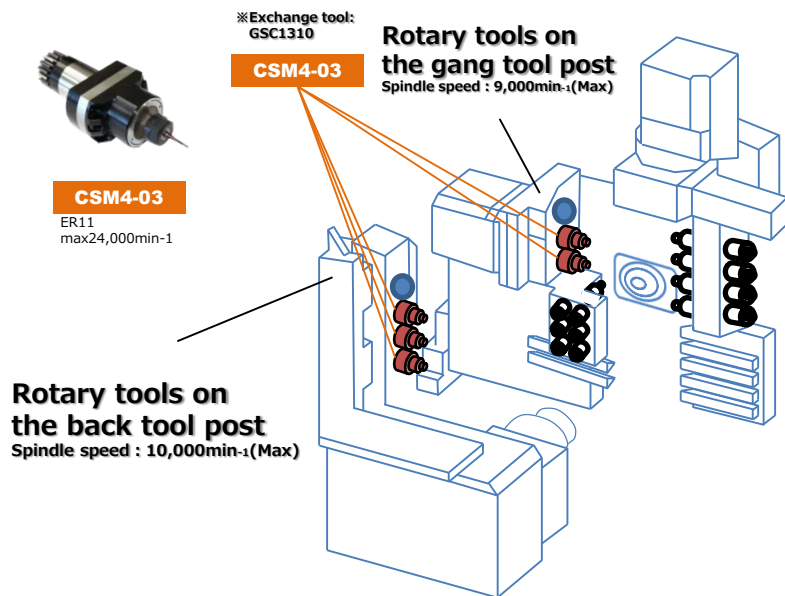
Opposite tool post
Rotary tools

Spindle speed : 6,000min⁻¹(Max)
3,000min⁻¹(rating)

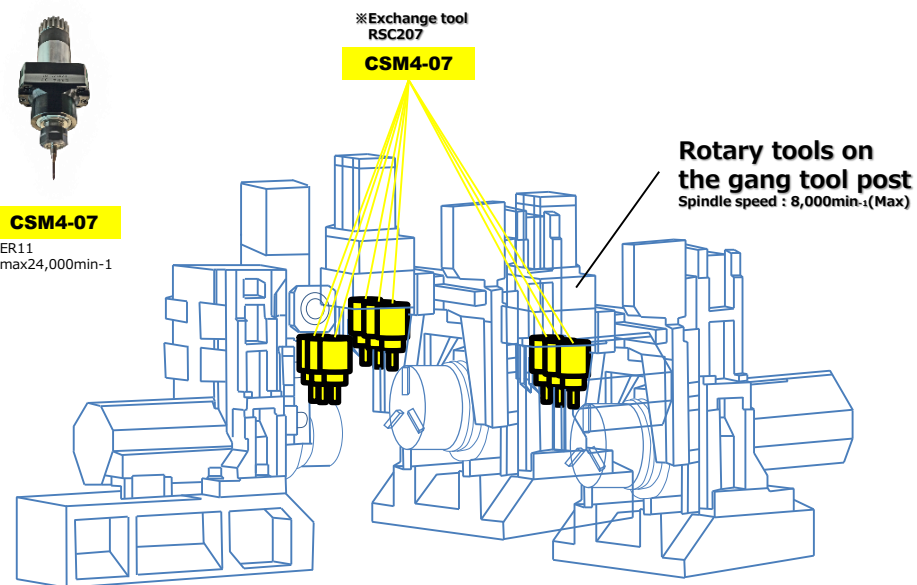
CSM4-03

•Cincom L32Ⅷ・Ⅸ・X・ⅩⅡ



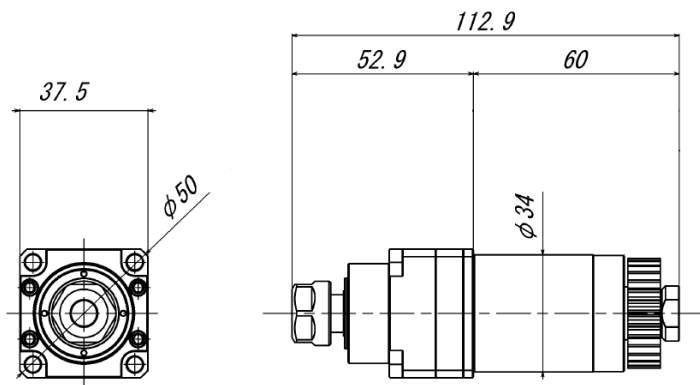


•Cincom D25 VII・VIII

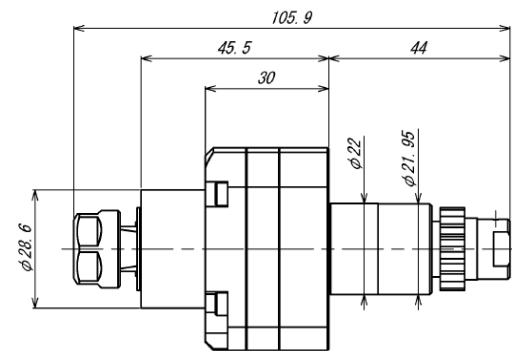
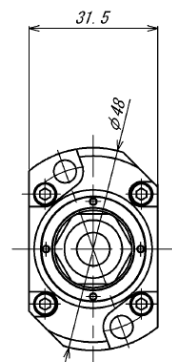


•Cincom MC20

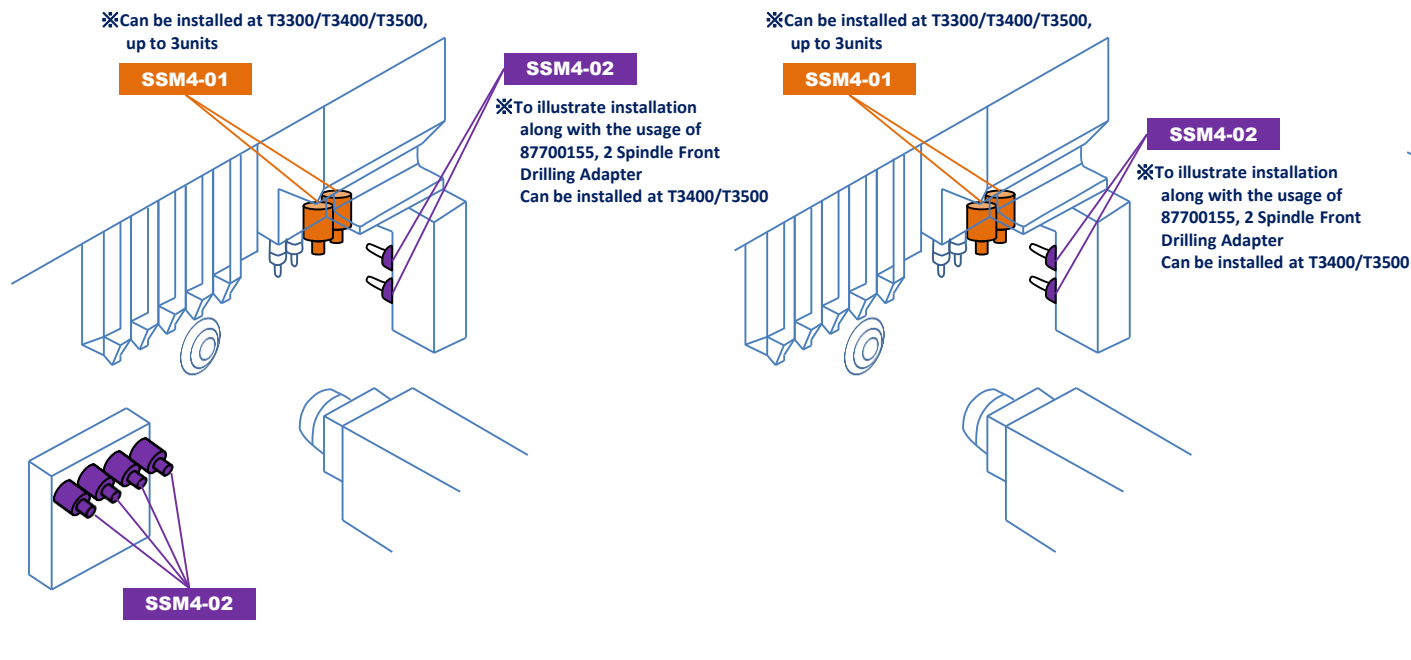
SSM
series



SSM4-01

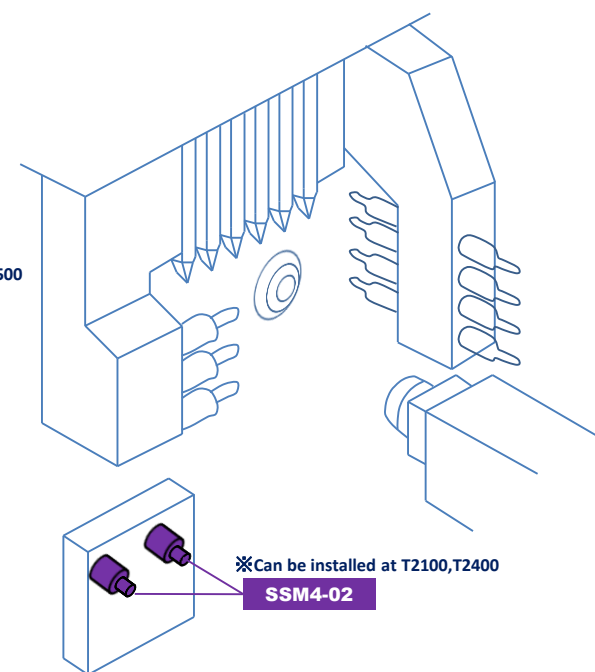


SSM4-02

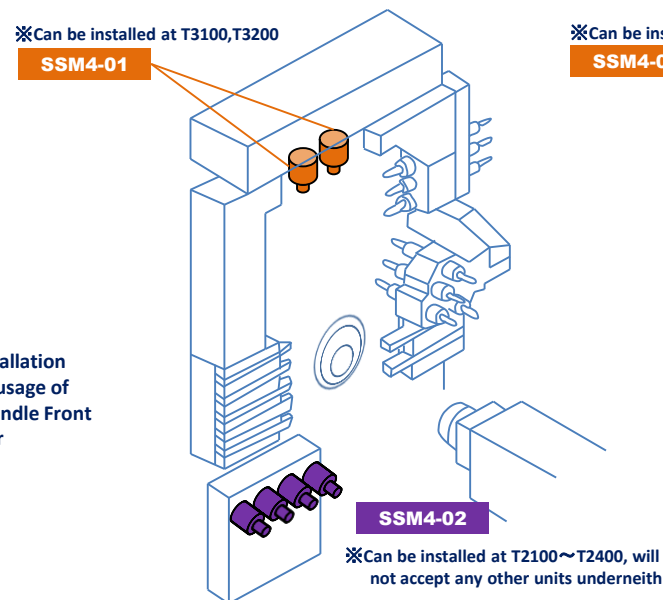
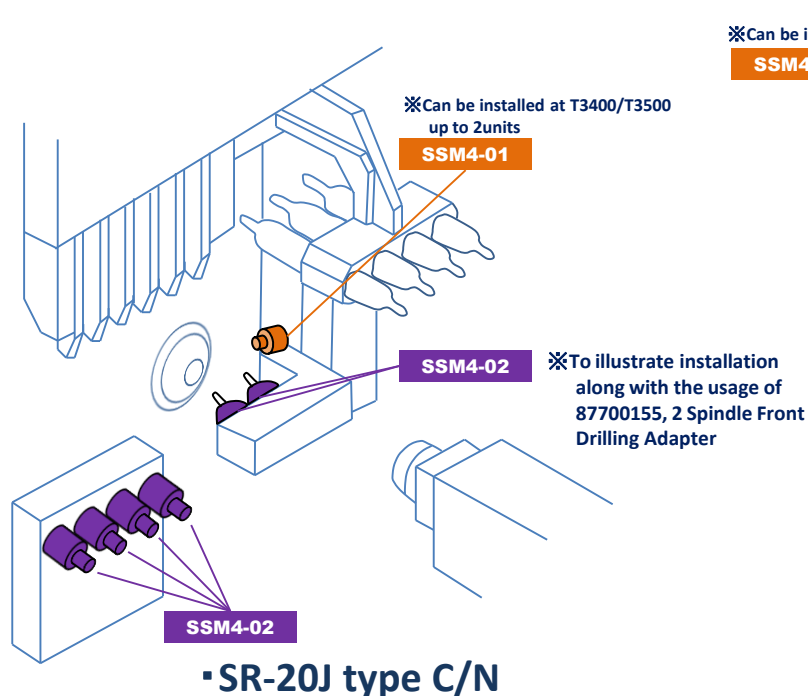


▪SB-12R / 16R / 20R type E/N/G

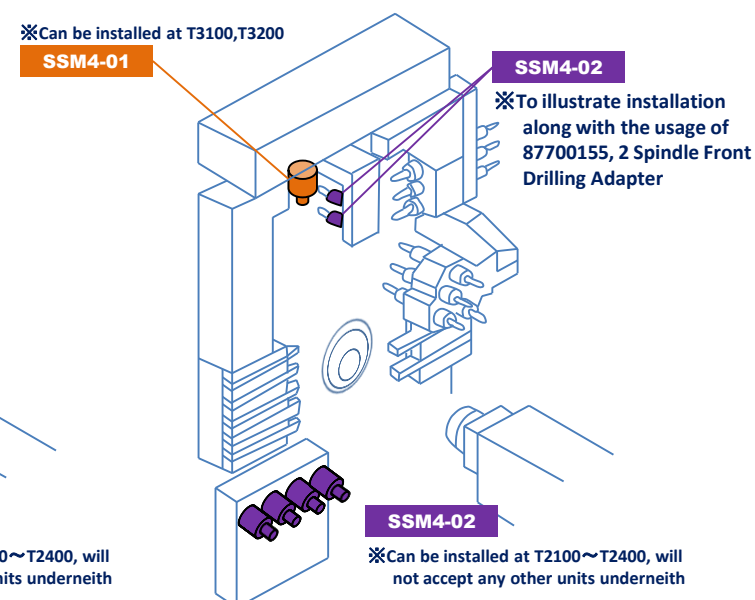
▪SB-16R / 20R type C

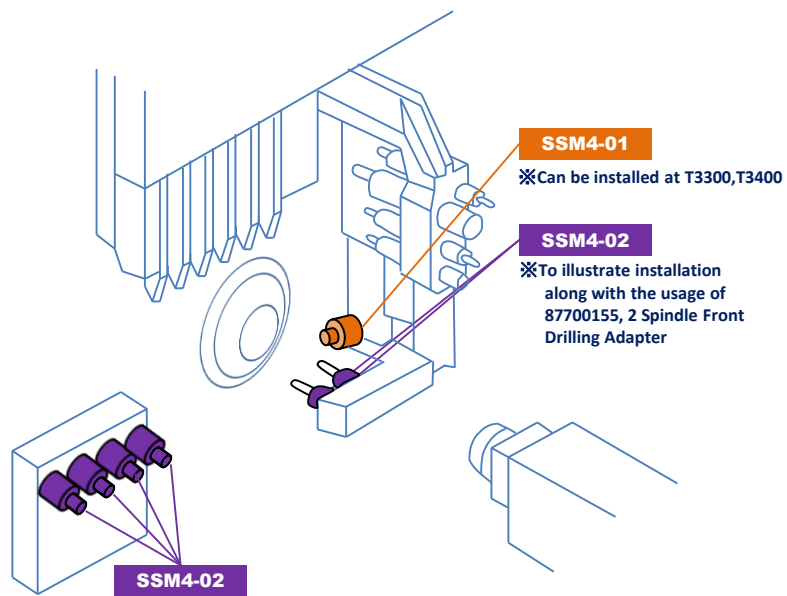


▪SR-10J type C

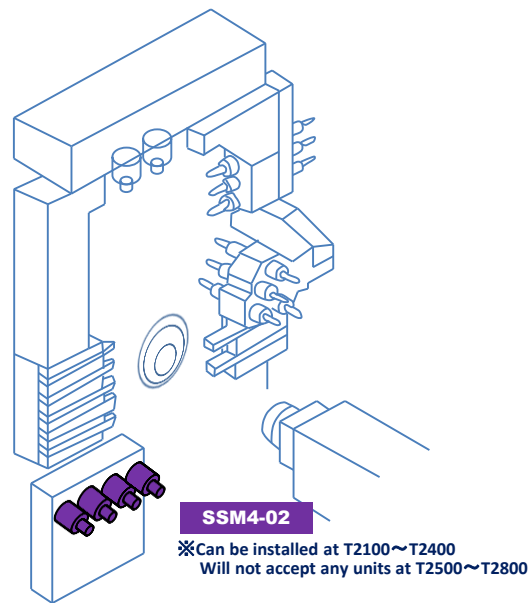


▪SR-20RIV type A/B

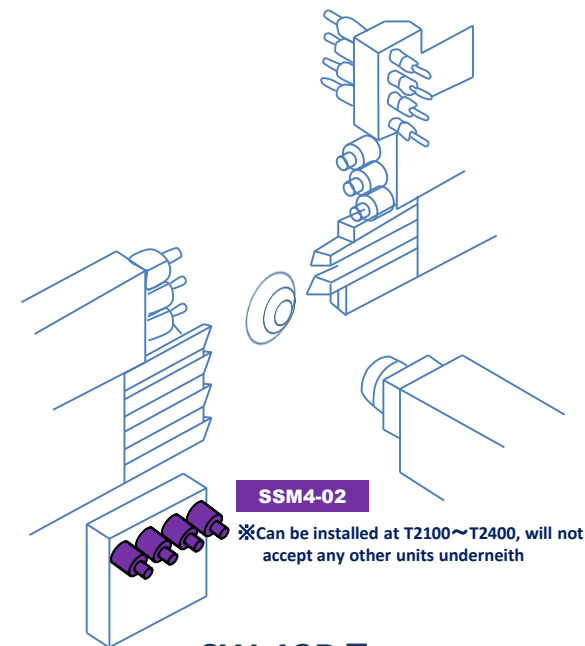




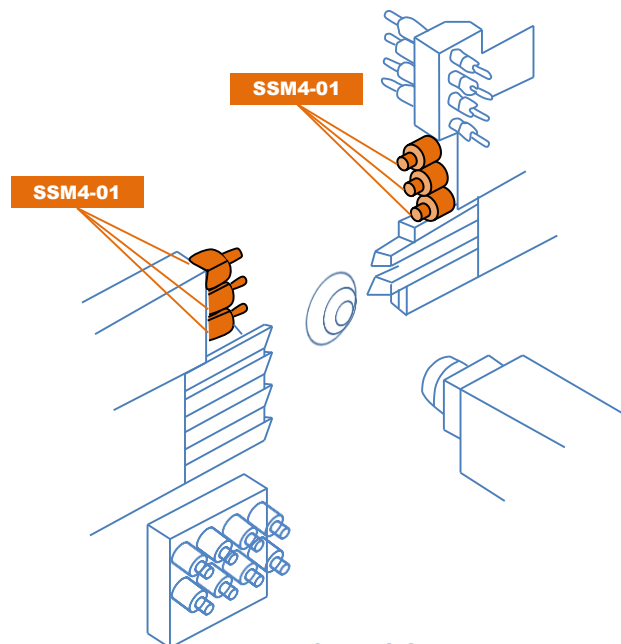
▪SR-32J / 32J type N



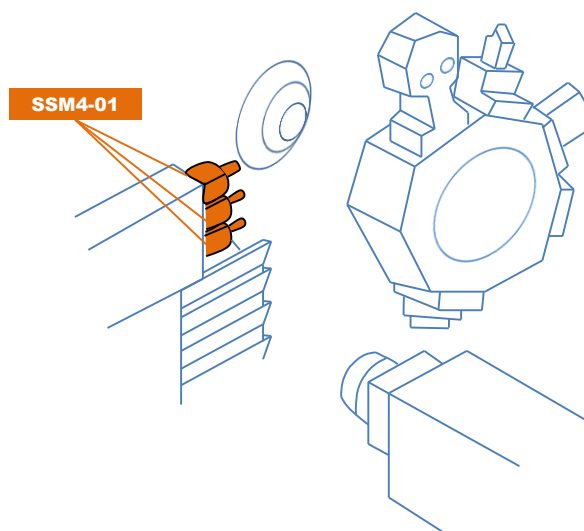
▪SR-38 type A/B



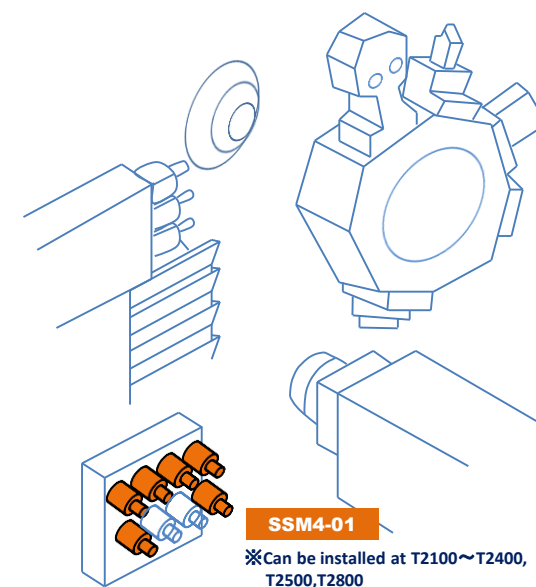
▪SW-12R II



▪SW-20

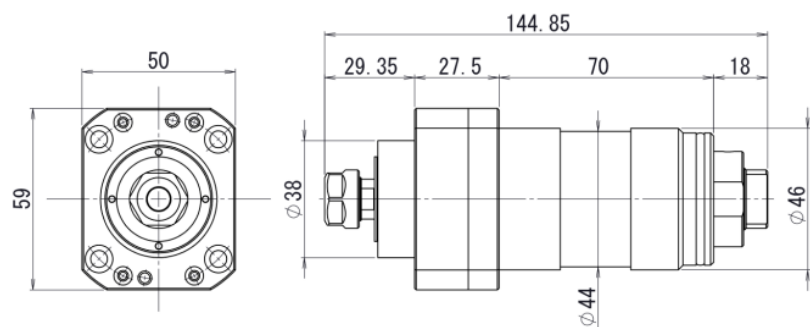


▪SV-12 / SV-20 / SV-32 / SV-32J II

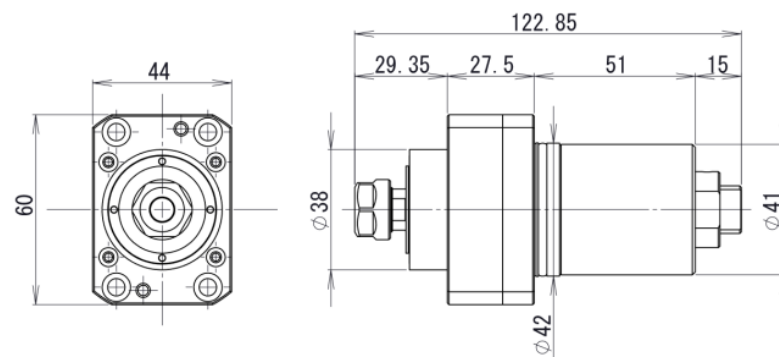


▪SV-38R

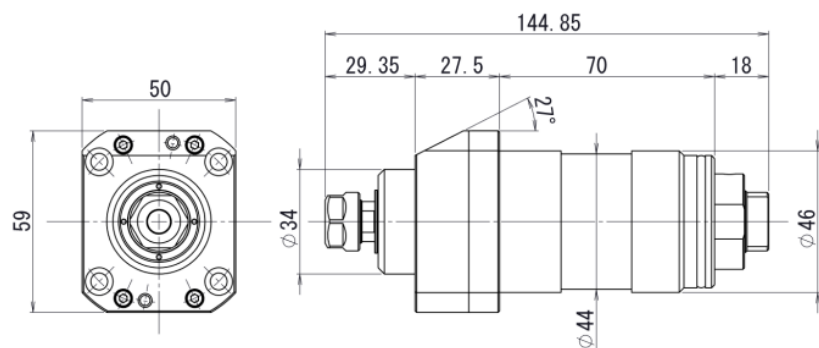
TSM
series



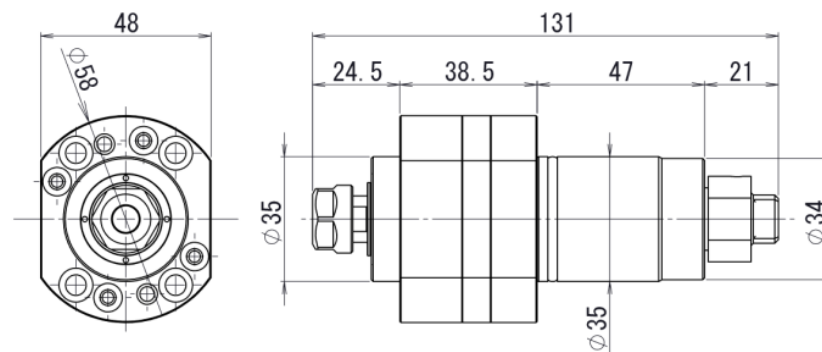
3290 -Y671



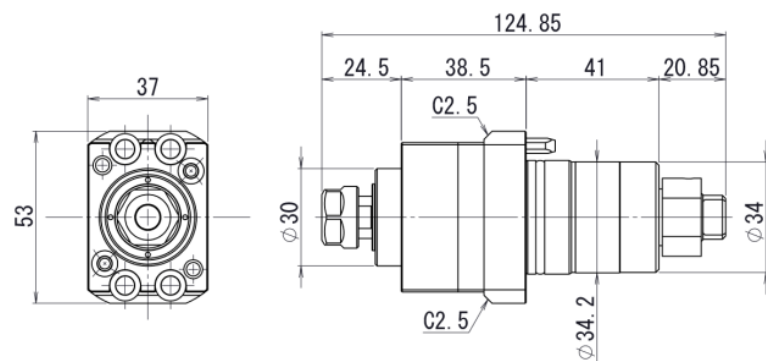
3290 -Y681



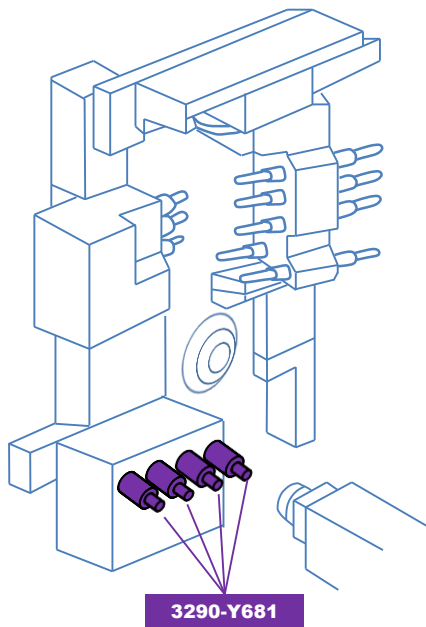
3290 -Y3671



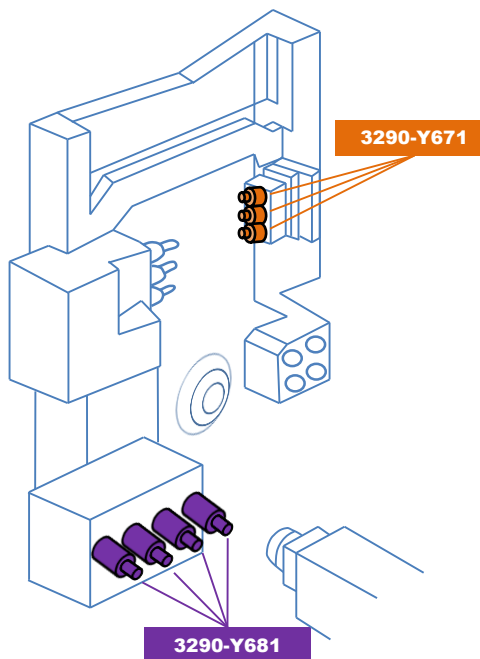
3220-Y7551-0101



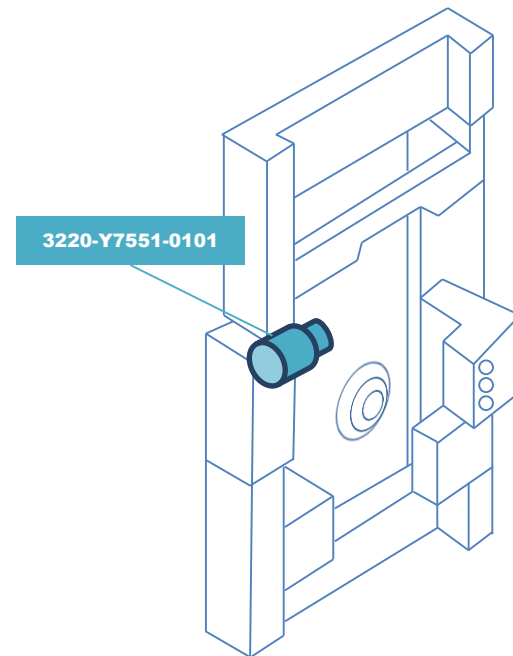
3281-Z06231-0100



▪ SS267 / SS327 / SS267-5AX
/ SS327-5AX



▪ B0265 II / B0265B- II / B0325- II /
B0325B- II / B0266- II / 0326- II



▪ B073-III / B074-III / B075-III
B0123-III / B0124-III / B0125-III
/ B0126-III B0203-III / B0204-III /
B0205-III / B0206-III

